

# TeleStacker<sup>®</sup> Conveyor

The Best Selling Telescoping Conveyor on the Planet



## Highest Capacity



Rates up to 5,000 TPH...at least 40% more than competitors.



## Fewest Moves

Limit downtime and load at least three hatches from the same feed point.



First Unit  
Built In

.....  
**1997**

## Most Experience

More than 800 telescoping conveyors manufactured to date.

Hold-to-hold  
in

.....  
**3 min.**



**5-year**

.....  
Structural  
Warranty

## Versatile Machine



Use the same piece of equipment to load, unload and stockpile.

## Solid Craftsmanship

Unparalleled stability and safety in environments with constant movement.

Units  
Up To

.....  
**5000**  
TPH



# Cutting Edge Conveying



## FB® Undercarriage\*

This robust undercarriage support system is simply designed with more steel for rock-solid bracing at the loader's most crucial points of stress.

## Loader Mobility

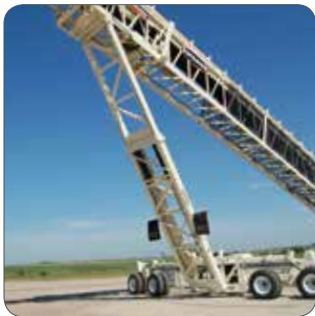
Equipped with a 360° turning radius at each point of travel, the TeleStacker conveyor has no boundaries and quickly moves from hatch to hatch.

## Support Rollers\*

These heavy-duty rollers support the stinger conveyor as it travels. Designed to be load equalizing, each carries even weight for less stress and long life.

## Dust Suppression

Sealed transfer points, conveyor hoods, curtains and discharge chutes ensure contaminants and dust are controlled and sealed within the conveyor.



\*Patented Innovations

## TOP 5

Reasons to own a

### Portable Telescoping Ship Loader

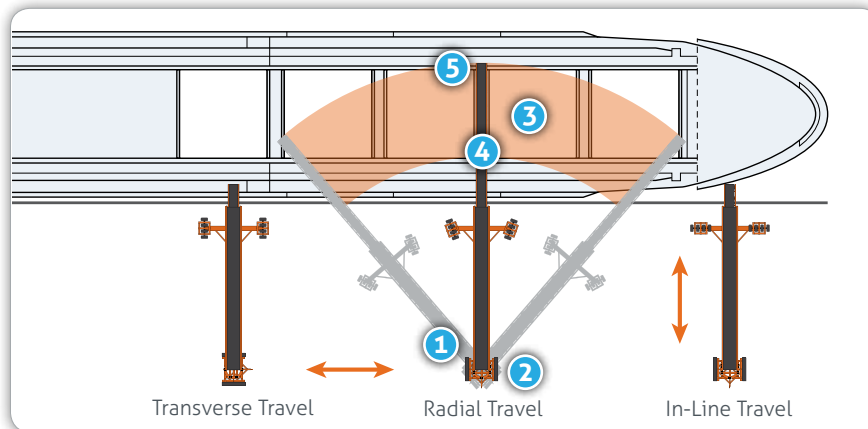


Minimize the number of moves and reduce downtime required to load a ship.



Telescoping feature allows controlled trajectory within full square of hold.

# How It Works



- ① Fill multiple hatches from one feed point.
- ② 360° rotation at each point of travel.
- ③ Telescoping action for fully trimmed hatches.
- ④ Luffing action adjusts to tides and ships.
- ⑤ Telescoping chute contains dust.

## Featured Extras



Hot-dip Galvanized and Epoxy Coatings



Flexible, Modular Hoppers



Onboard Power Supply



Two Wheel Mobile Pivot Base

## Ship Unloading



Load at least three hatches from the same feed point without relocation.



Dock is unequipped to handle bulky, stationary loading systems.



Terminal economics drive a lower capital equipment purchase.



# TeleStacker Conveyor Specifications

	Aggregate Duty TeleStacker Conveyor	Mine Duty TeleStacker Conveyor	Marine Duty TeleStacker Conveyor
Time of Operation	<i>Class I (1.0 SF or 10 hour shift)</i>	<i>Class III (2.0 SF or 24 hour shift)</i>	<b>Class II (1.5 SF or 16 hour shift)</b>
Environment	<i>Dry/Inland</i>	<i>Dry/Inland</i>	<b>Coastal</b>
Finish	<i>Enamel</i>	<i>Enamel</i>	<b>Galvanized or Epoxy</b>
Operating Tonnage	<i>200 - 1,500 TPH</i>	<i>200 - 3,000 TPH</i>	<b>500 - 5,000 TPH</b>
Belt Width	<i>24" - 42"</i>	<i>24" - 72"</i>	<b>36" - 72"</b>
Belt Thickness	<i>1/2" Abrasion Resistant Covers</i>	<i>3/4" Flame or Cut/Gouge-resistant</i>	<b>3/4" MOR Grain or Wood Chip</b>
Primary Belt Scraper	<i>Exterra® Primary Belt Scraper</i>	<i>Mine Duty Belt Scraper</i>	<b>Mine Duty Belt Scraper</b>
Secondary Belt Scraper	<i>Optional</i>	<i>Mine Duty Belt Scraper</i>	<b>Mine Duty Belt Scraper</b>
Pulleys	<i>CEMA</i>	<i>Mine Duty 2.0</i>	<b>Mine Duty 2.0</b>
Pulley Lagging	<i>3/8" HBR</i>	<i>1/2" HBR</i>	<b>1/2" HBR</b>
Motor	<i>Standard</i>	<i>Severe Duty</i>	<b>Severe Duty</b>
Gearing	<i>V-belt/Shaftmount</i>	<i>Right Angle/Direct Coupled</i>	<b>Right Angle/Direct Coupled</b>
Bearings	<i>Pillow Block</i>	<i>SAF Pillow Block</i>	<b>SAF Pillow Block</b>
Take-ups	<i>Wide Slot Take-up</i>	<i>Heavy Duty Take-up</i>	<b>Heavy Duty Take-up</b>
Idlers	<i>5" CEMA B and C</i>	<i>6" CEMA C, D and E</i>	<b>6" CEMA C, D and E</b>
Skirting/Load Area	<i>5' with Sealing System</i>	<i>5' - 10' with Sealing System or Impact Bed</i>	<b>5' - 10' with Sealing System</b>
Remote Greasing	*	<i>Recommended</i>	<b>Recommended</b>
Movement Horn	*	<i>Recommended</i>	*
Zero Speed Switch	*	<i>Recommended</i>	<b>Recommended</b>
Mis-Alignment Switch	*	<i>Recommended</i>	<b>Recommended</b>
E-Stop and Cable	*	<i>Recommended</i>	<b>Recommended</b>
Rip Detection Switch	*	<i>Recommended</i>	<b>Recommended</b>
Area Lighting	*	<i>Recommended</i>	*
Tracks	*	<i>Recommended for Heap Leach</i>	*
FB® Undercarriage	<i>Required</i>	<i>Required</i>	<b>Required</b>
Portability	<i>FD Axle, Swing Axle</i>	<i>FD Axle, Pit Portable Axle</i>	<b>FD Axle, Pit Portable Axle, Fixed Radial Axle</b>
Guarding/Handrails	*	<i>Painted Safety Yellow</i>	<b>Painted Safety Yellow</b>
Discharge Hoods	*	<i>Recommended</i>	<b>Recommended, Telescoping Chutes Available</b>
Hood and Skirting Liners	<i>1/4" AR 225</i>	<i>1/2" AR 400</i>	<b>3/8" AR 400</b>
Belt and Wind Covers	*	<i>Recommended for Dust</i>	<b>Recommended for Dust</b>

\*Available



**90**  
Second  
.....  
Truck Cycle  
Times

**Maintain Quality** 

Material maintains its spec as it is handled once from truck to ship or barge.

**Truck Unloading** 

Drive over RazerTail® Truck Unloader moves material from belly or end dump trucks to ship loader.

Available  
Belt Widths  
.....  
**48 & 72**  
Inch

